



ALUMINUM SOLAR FENCE MOUNTING STRUCTURE

Better Design, Better Support, Better Price

We respect your project and installation. Every single detail of this solar fence mounting structure has been considered and optimized.

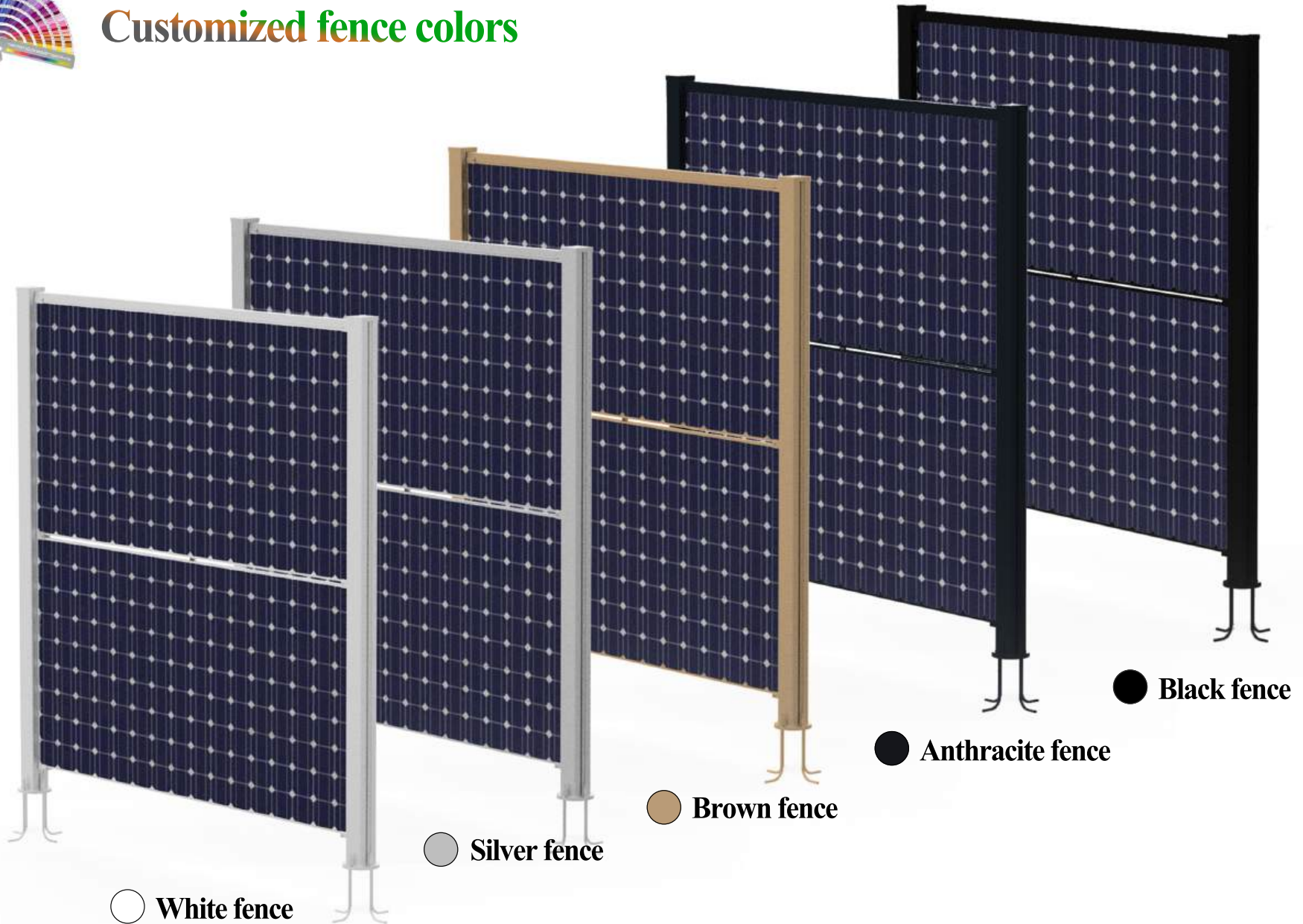
- Designed by professional engineer team. Structure are stable and safety.
- The appearance is neat and the bracket is strong and reliable.
- Hidden cables, effectively reducing cable exposure.

Every component has been fully optimized with better design, better support for easier faster installation experience.

CORIGY fence mounting structure is the best choice for you.

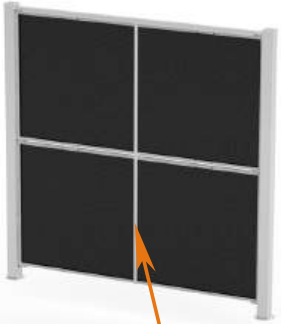


Customized fence colors



CP-TCT/Top cable groove hider

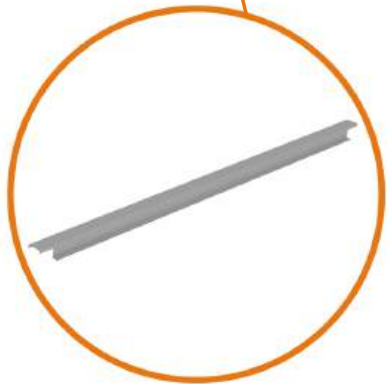
Back of the fence



CP-EC/End clamp



CP-CTC/Column top cover



CP-MMT
Middle cable groove hider



CP-IC/Middle clamp



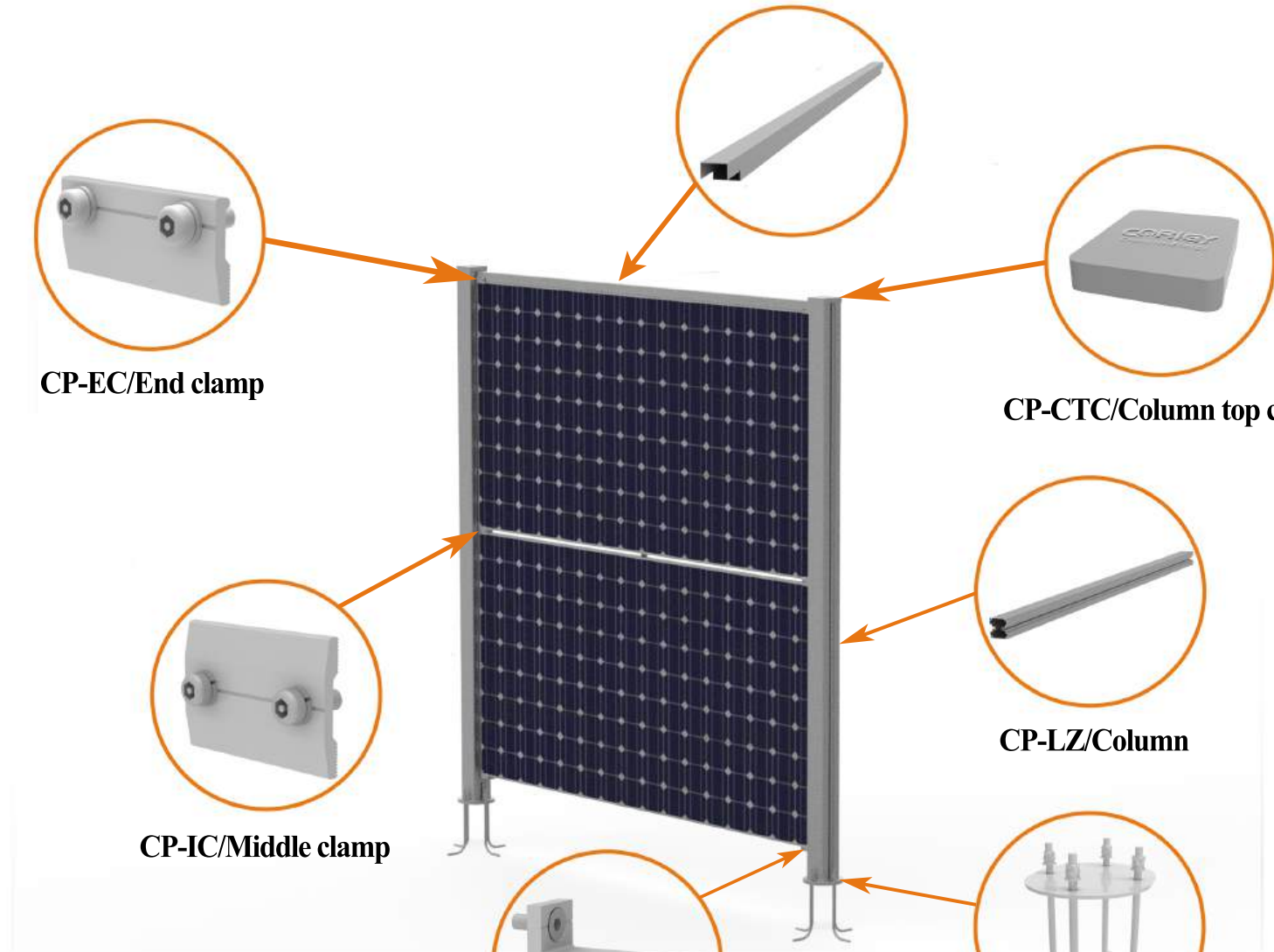
CP-LZ/Column

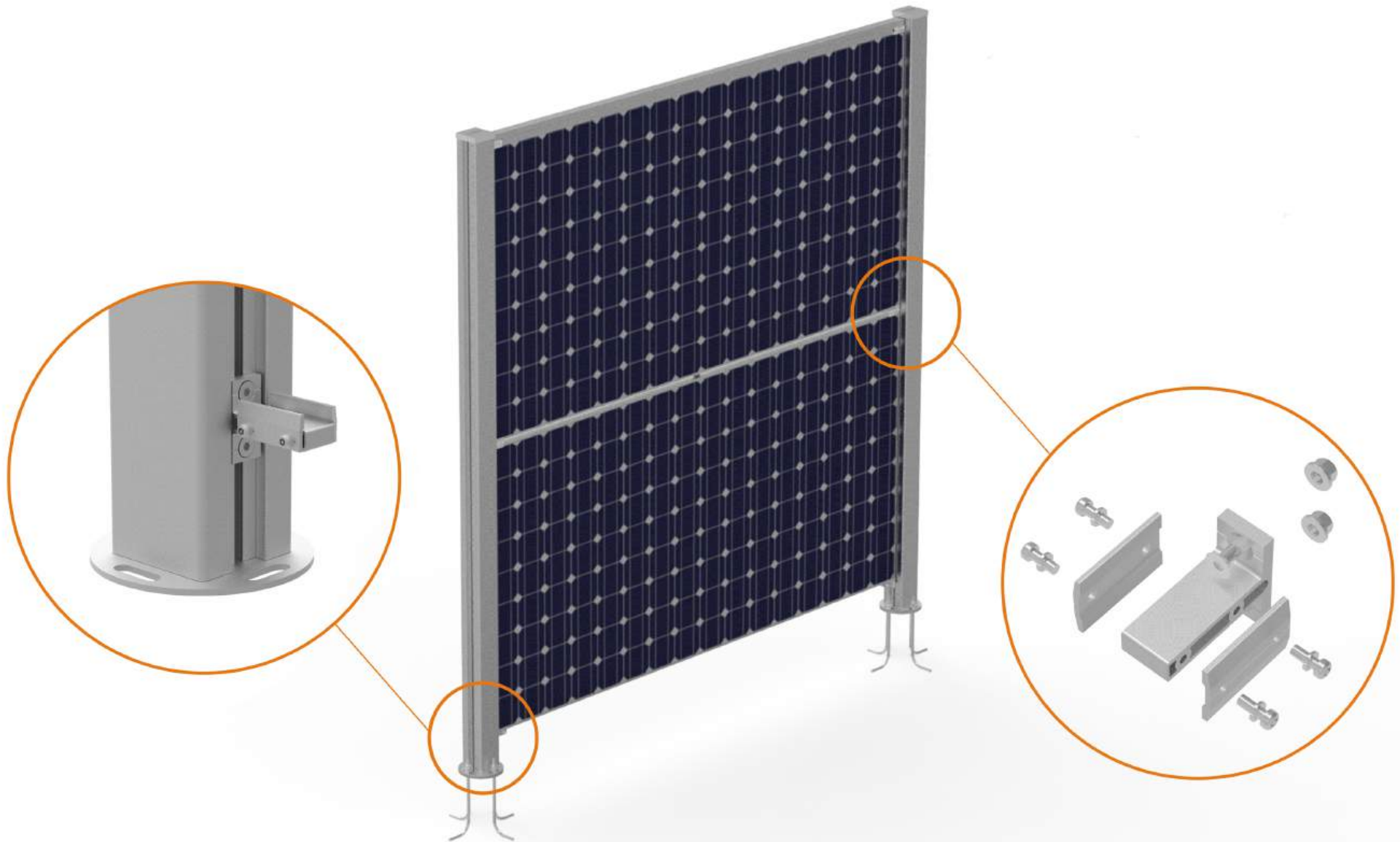


CP-T-32/Connector



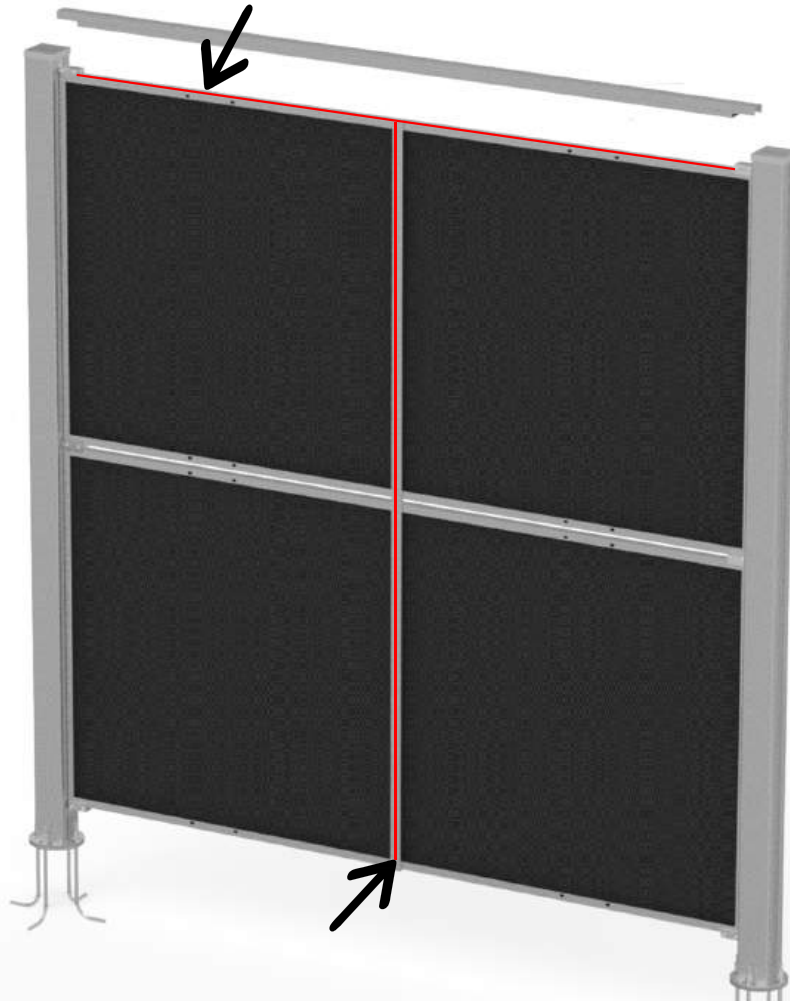
CP-CBP/Column base plate



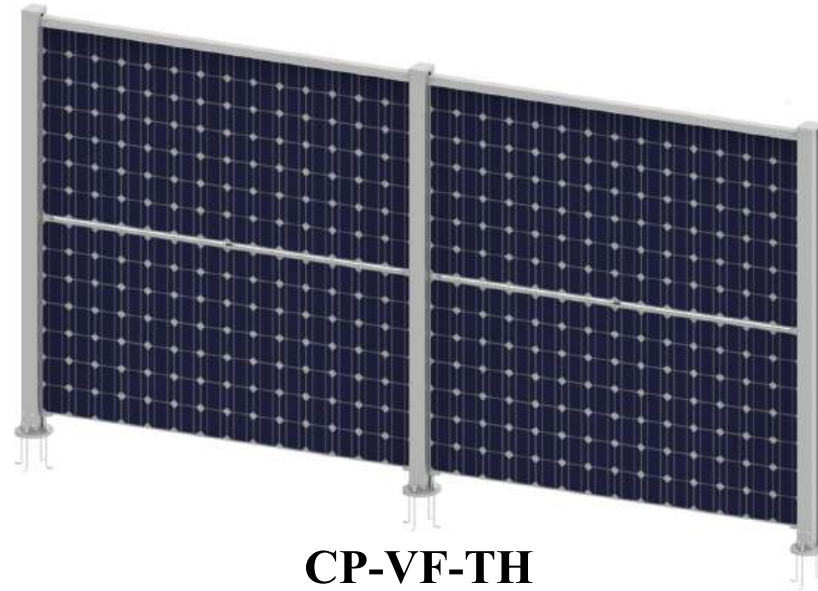


- **Adjustable up and down to fit solar panels of different sizes.
Suitable for solar panels with a thickness of 30-35mm.**

The cable is pasted on the top of the solar panels and covered by a top cover. The cable can pass through the pillar along the direction of the solar panels and be connected to other solar panels cables.



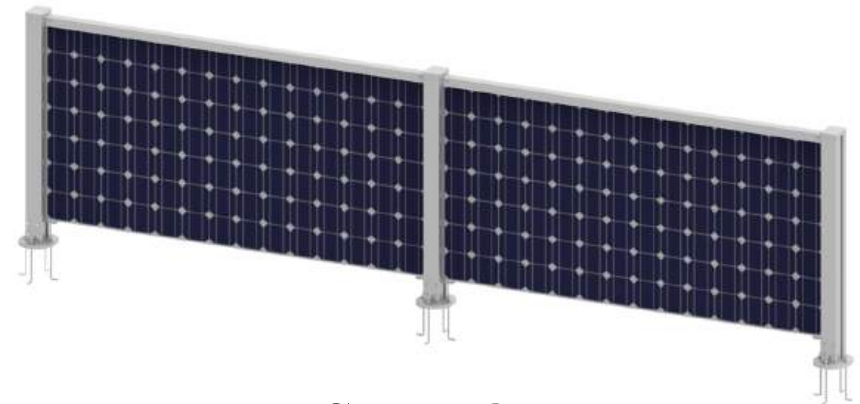
The cable lines converge along the direction of the cover at the top.



CP-VF-TH
Two rows solar panels horizontal installation



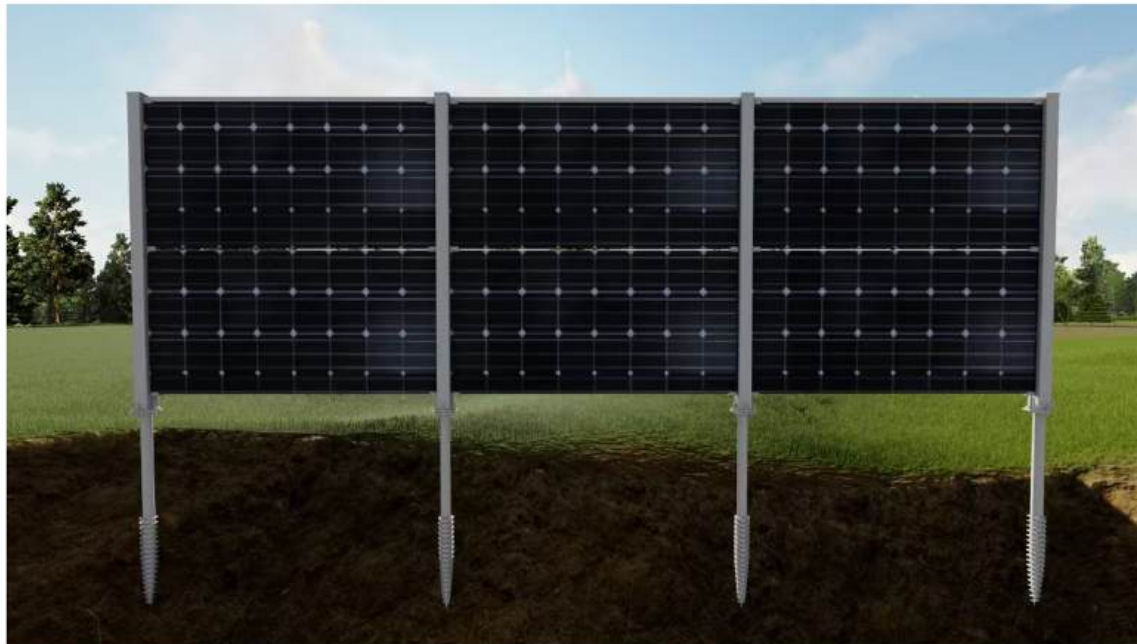
CP-VF-OV
One row solar panels vertical installation



CP-VF-OH
One row solar panels horizontal installation



● Cement foundation



● Ground screw foundation

Item No.	CP-VF-OH	CP-VF-TH	CP-VF-OV
Layout of the panel	1×2	2×2	1×2
Direction of panel	Horizontal	Horizontal	Vertical
Dimensions of the module	Suitable for module with 30/35mm thickness,no limit on length and width		
Installation angle	90 Degrees		
Lowest height of structure	150mm		
Material	Main material aluminum AL6005-T5		
Color	The original color is silver, optional white, brown, black, anthracite		
Surface treatment	Anodizing/Baking varnish		
Design wind speed	30m/s		
Design snow load	1.1KN/m ²		
Basement	Cement or ground piles		
Warranty	10 Years		
Applicable environmental	Residential areas, commercial and industrial properties		

